



**CUMBERLAND COUNTY COMMISSIONERS
WORKSHOP AGENDA
Monday, January 10, 2022**

TIME: Immediately following the regularly scheduled Commissioner Meeting

The County Commissioners will hold their meeting on Zoom.
The public may watch the YouTube video stream live on cumberlandcounty.org/live

WORKSHOP (Immediately after adjournment):

1. Update on County ARPA projects
2. Introduction to emergency sheltering in regional motels



Jim Gailey <gailey@cumberlandcounty.org>

Buildout at Communication Center

1 message

Bruce Tarbox <tarbox@cumberlandcounty.org>

Thu, Jan 6, 2022 at 10:18 AM

To: Jim Gailey <gailey@cumberlandcounty.org>, William Trufant <trufant@cumberlandcounty.org>, Sandra Warren <warren@cumberlandcounty.org>

See attached drawings of options to support requests to add additional space at the communication center. Request was to have space necessary to have one large area that could be separated into two offices with negative pressure that provided a work location for two positions separated physically and by HVAC segregation from the main dispatch area.

Option 1 is the first layout with two stations. Unable to provide the original request and vision of the buildout due to the area available which is 15 ft. by 20 ft. This area is restricted in size currently by existing mechanical equipment located next to this buildout. This mechanical equipment provides tempered air to the dispatch area. Cost estimated is \$500,000 for this option.

Option 2A provides space for original requests. Shows two separated areas when needed with two stations. In order to provide space necessary for this option it shows relocation of existing mechanical equipment in an exterior addition. Cost estimated is \$1,000,000 for this option.

Option 2B provides space the same size as option 2A but supports space for a quad furniture unit instead of two separated work areas. Requires as in Option A relocation of mechanical equipment. No folding partition. This option was requested for example to show potential future growth. Cost estimated is \$1,000,000 for this option.

Option 3 maxes out the space in the building and adds 6 stations. This also requires the need for a mechanical addition. This option is requested for example to show potential future growth. This buildout was reviewed in 2011 as a request to increase size and preliminary drawings were developed at that time. Cost estimated is \$1,100,000 for this option.

I present options for discussion needed to bring the final design to SMRT.

Thanks Bruce

--

Bruce Tarbox

Facilities

Cumberland County
871-8293



Notice: Under Maine law, documents - including e-mails - in the possession of public officials or employees about government business may be classified as public records. There are very few exceptions. As a result, please be advised that what is written in an e-mail could be released to the public and/or the media if requested.

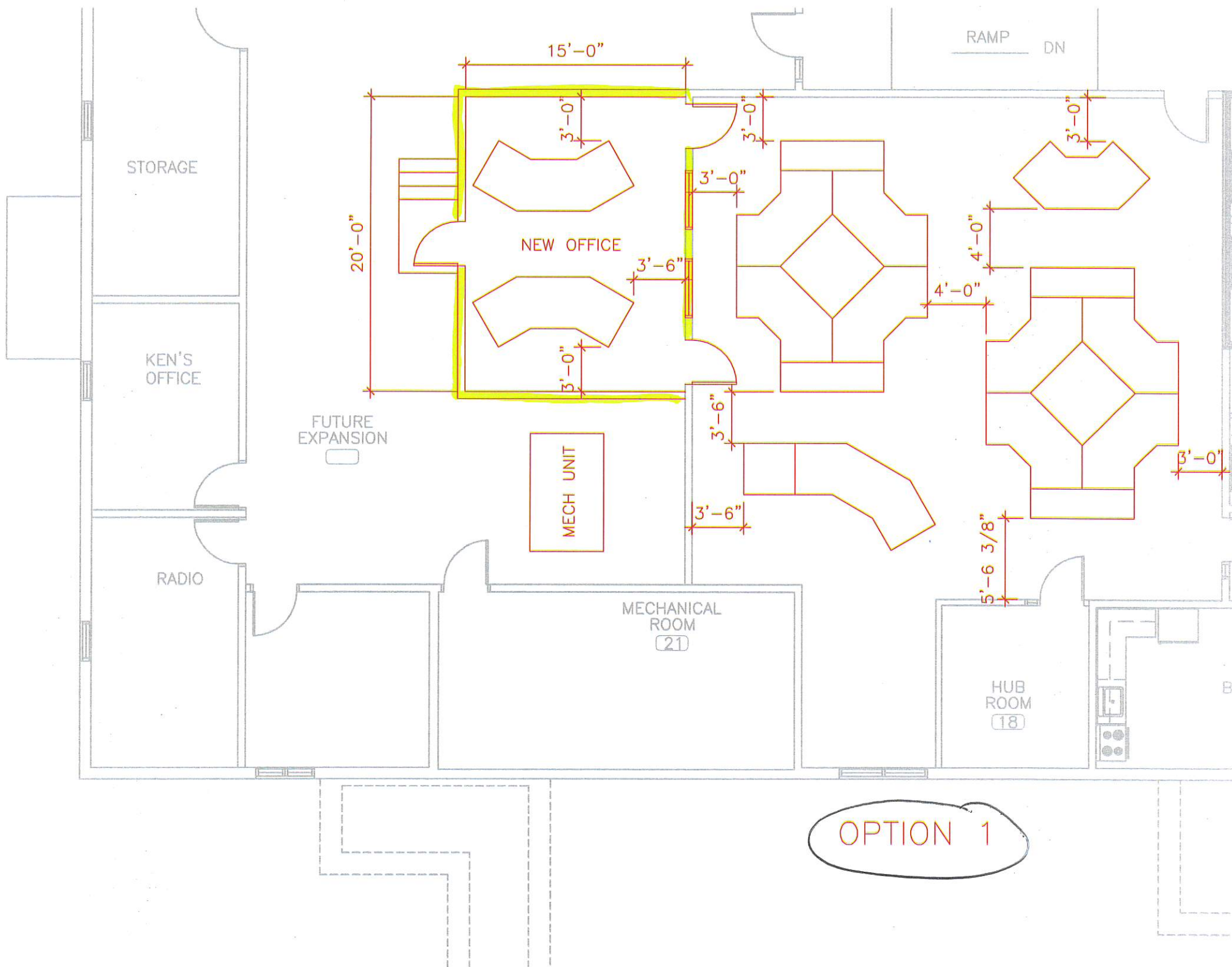
4 attachments

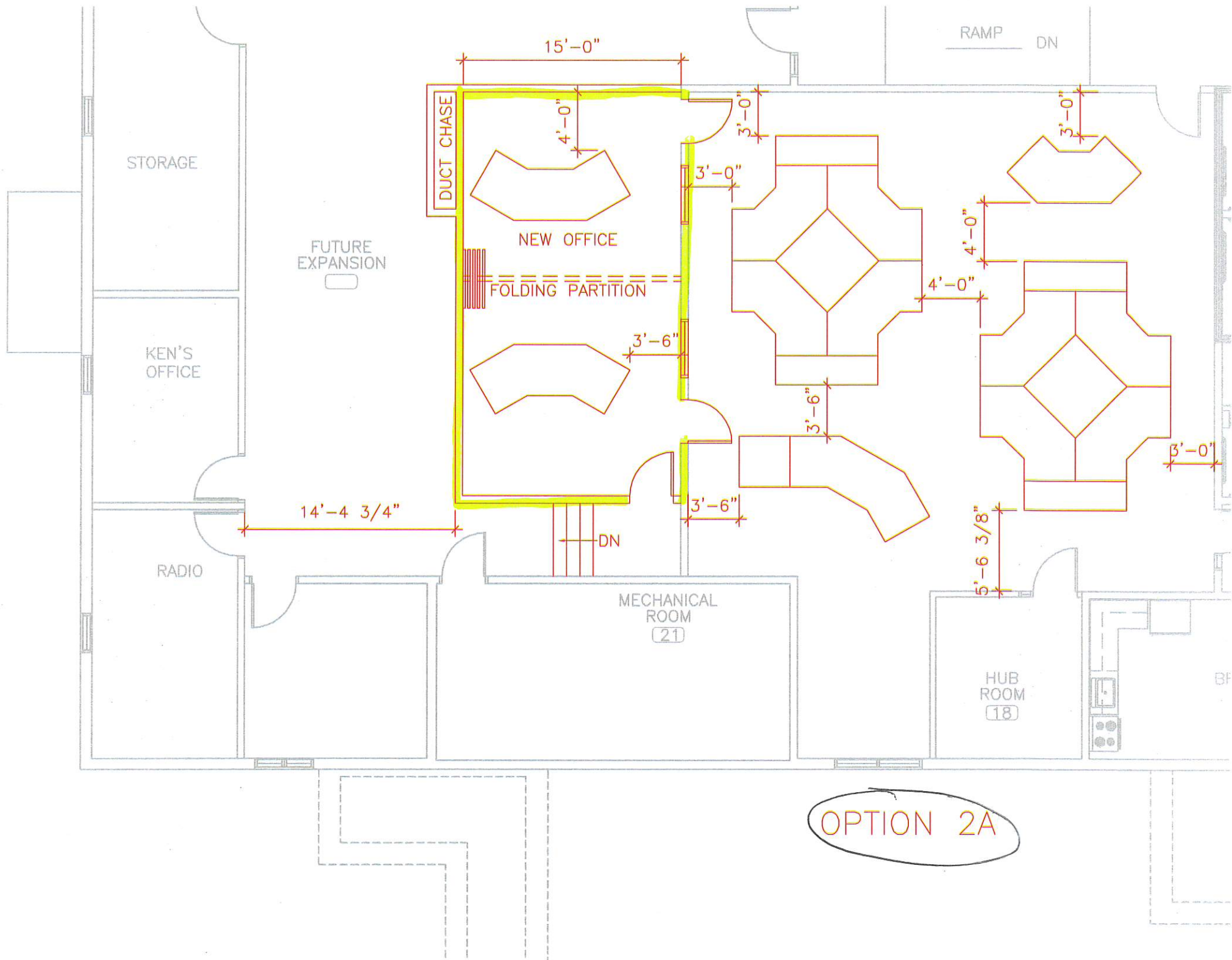
 **220105 Option 01.pdf**
66K

 **220105 Option 02A.pdf**
68K

 **220105 Option 02B.pdf**
68K

 **220105 Option 03.pdf**
67K





OPTION 2A

